

Beaumont Drive, Worcester Park, KT4

Monthly Rental Of £1,350.00 Leasehold

2 Bedrooms | 2 Bathrooms | 1 Reception

IVY GATE™



Summary:

Presented to the market in good condition throughout this two double bedroom, two bathroom apartment sits within the highly desirable and prestigious Hamptons development. The property is located in a secure purpose built block and benefits from secure allocated underground parking. Upon entering the property there is a spacious hallway with plenty of built in storage. The large open plan kitchen/living room is neutrally decorated to a very high standard and has modern integrated appliances including a washer/dryer. There is a large second double bedroom and the master bedroom has a spacious modern ensuite bathroom complete with a rainforest shower. There is also a modern family bathroom with shower over bath.

Two double bedrooms

Two bathrooms

Open plan living accommodation

Modern kitchen and bathrooms

Secure underground allocated parking

Residents gym

Beaumont Drive, Worcester Park, KT4

Monthly Rental Of £1,350.00 Leasehold

2 Bedrooms | 2 Bathrooms | 1 Reception

IVY GATE™

Two double bedrooms

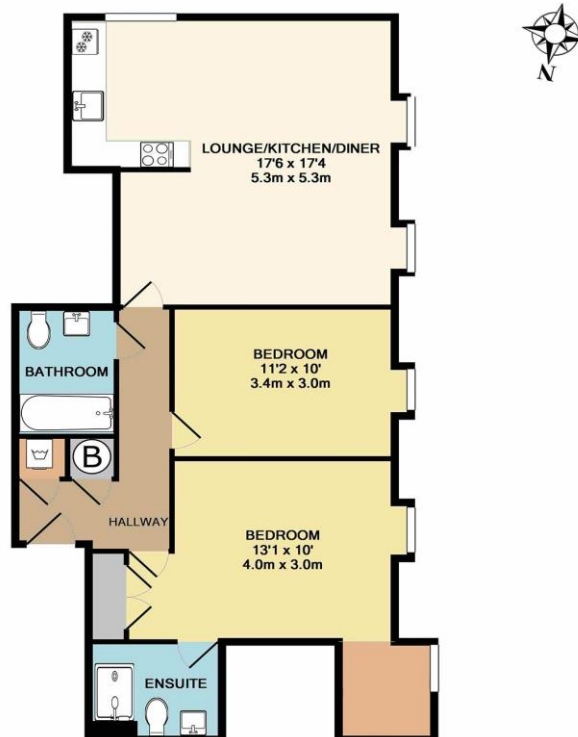
Two bathrooms

Open plan living accommodation

Modern kitchen and bathrooms

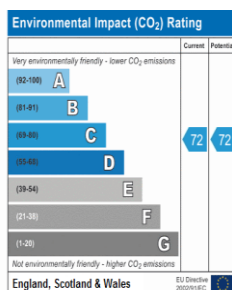
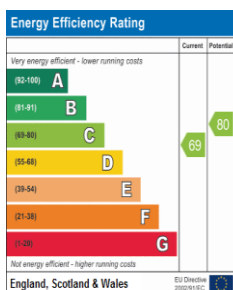
Secure underground allocated parking

Residents gym



TOTAL APPROX. FLOOR AREA 765 SQ.FT. (71.1 SQ.M.)

Whilst every attempt has been made to ensure the accuracy of the floor plan contained here, measurements of doors, windows, rooms and any other items are approximate and no responsibility is taken for any error, omission, or mis-statement. This plan is for illustrative purposes only and should be used as such by any prospective purchaser. The services, systems and appliances shown have not been tested and no guarantee as to their operability or efficiency can be given
Made with Metropix ©2017



Tenure: Leasehold

Council Tax: D

Local Authority: London Borough of Sutton

EPC Rating: C

MONEY LAUNDERING REGULATIONS 2003

Intending purchasers will be asked to produce identification and proof of financial status when an offer is received. We would ask for your co-operation in order that there will be no delay in the offer process.

THE PROPERTY MISDESCRIPTIONS ACT 1991

The agent has not tested any apparatus, equipment, fixtures and fittings or services and so cannot verify that they are in working order or fit for the purpose. A Buyer is advised to obtain verification from their Solicitor or Surveyor. References to the Tenure of a Property are based on information supplied by the Seller. The Agent has not had sight of the title documents. The mention of any appliances and services within these details does not imply that they are in full and efficient working order. These particulars are intended as a guide and act as information to prospective buyers. They are not an offer or contract, or part of one. All details, areas, measurements floorplans and distances referred to are given as a guide only and should not be relied upon, they are approximate and illustrative only and **not to scale**. Lease details, service charges and ground rent (where applicable) are given as a guide only and the agent has not had sight of the original documentation, they should be checked by your solicitor prior to exchange of contracts.