

Alexandra Road, Thames Ditton, KT7

£369,950 Leasehold

1 Bedrooms | 1 Bathrooms | 1 Reception

IVY GATE™



Summary:

Ivy Gate are delighted to introduce to the market this attractive one bedroom garden flat. This Victorian conversion is located on a highly sought after "River Road" in the heart of Thames Ditton village. Comprising, Communal entrance hallway, spacious reception room with bay window and fireplace, hallway with built-in storage, kitchen and bathroom. Leading from the kitchen is private patio garden with shed. We believe this well presented home will appeal to buyers looking for desirable residential road with a lovely community feel. The property is conveniently located near to the River Thames, Surbiton and Thames Ditton town centres as well as Kingston and all of its amenities. Hampton Court Palace and Bushy Park are also close by. There are excellent transport links with direct trains from Surbiton and Thames Ditton to Waterloo and for the motorist, the A3, M3, M25 is within easy reach.

Large 1 Bed Conversion

Modern Kitchen

Plenty Storage

Feature Fireplace

Private garden with rear access

Sort after location close to Station, River, Park and

Alexandra Road, Thames Ditton, KT7

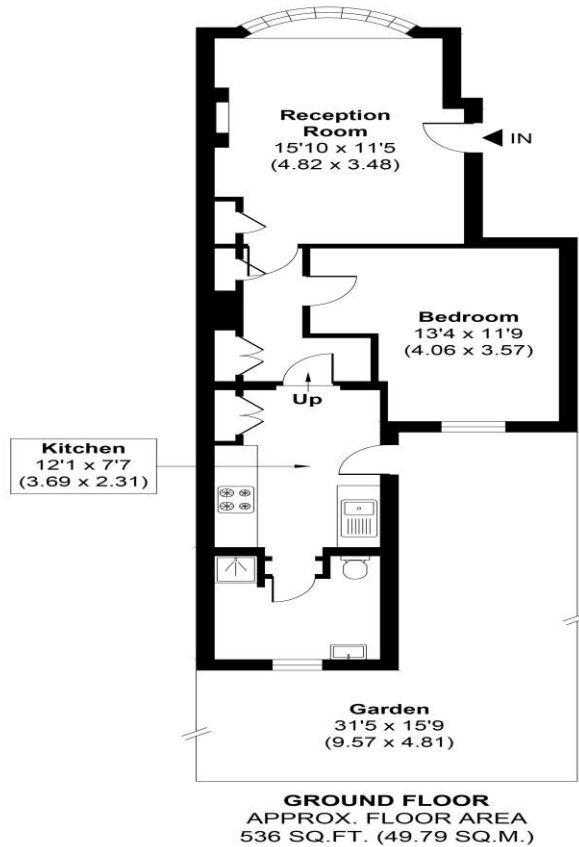
£369,950 Leasehold

1 Bedrooms | 1 Bathrooms | 1 Reception

IVY GATE™



ALEXANDER ROAD APPROX. GROSS INTERNAL FLOOR AREA 536 SQ FT / 49.79 SQ METERS



Tenure: Leasehold

Council Tax: C

Local Authority: Elmbridge Borough Council

EPC Rating: C

MONEY LAUNDERING REGULATIONS 2003

Intending purchasers will be asked to produce identification and proof of financial status when an offer is received. We would ask for your co-operation in order that there will be no delay in the offer process.

THE PROPERTY MISDESCRIPTIONS ACT 1991

The agent has not tested any apparatus, equipment, fixtures and fittings or services and so cannot verify that they are in working order or fit for the purpose. A Buyer is advised to obtain verification from their Solicitor or Surveyor. References to the Tenure of a Property are based on information supplied by the Seller. The Agent has not had sight of the title documents. The mention of any appliances and services within these details does not imply that they are in full and efficient working order. These particulars are intended as a guide and act as information to prospective buyers. They are not an offer or contract, or part of one. All details, areas, measurements floorplans and distances referred to are given as a guide only and should not be relied upon, they are approximate and illustrative only and **not to scale**. Lease details, service charges and ground rent (where applicable) are given as a guide only and the agent has not had sight of the original documentation, they should be checked by your solicitor prior to exchange of contracts.