

# Donald Woods Gardens, Surbiton

## Monthly Rental Of £2,150

3 Bedrooms | 2 Bathrooms | 1 Reception

**IVY GATE™**



### Summary:

Ivy Gate are pleased to present to the market this well loved three-bedroom end of terrace house in the ever popular Donald Wood Gardens development. Located in a quiet residential area and moments from Tolworth Station. The ground floor comprises of a good size fitted kitchen, downstairs W.C and a generous size living room offering adequate space for lounge and dining space as well as access to a well maintained private back garden benefitting from a new shed and a side gate. To the first floor you'll find the family bathroom and three good sized bedrooms with an en-suite off the main bedroom. having just undergone a full decoration and with wooden flooring throughout on both floors, the house is offered unfurnished and available now.

**Beautiful Three Bedroom House**

**Quiet sought after development**

**Freshly Decorated Throughout**

**Main Bedroom with En-Suite**

**Downstairs W.C**

**Beautiful Private Rear Garden**

# Donald Woods Gardens, Surbiton

## Monthly Rental Of £2,150

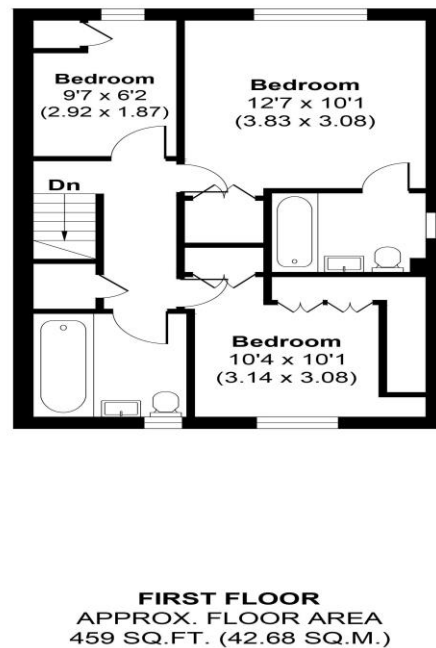
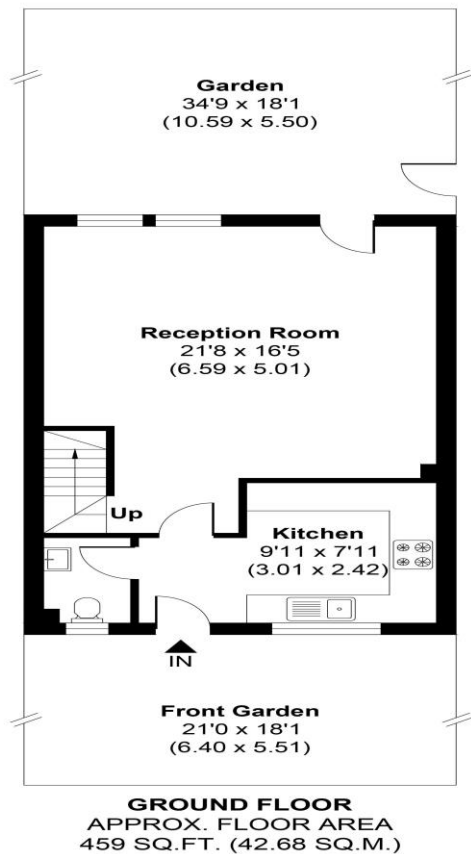
3 Bedrooms | 2 Bathrooms | 1 Reception

IVY GATE™



### DONALD WOODS GARDENS

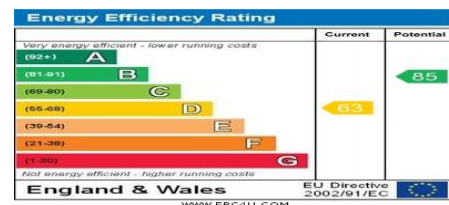
APPROX. GROSS INTERNAL FLOOR AREA 918 SQ FT / 85.36 SQ METRES



Tenure:

Council Tax: E

Local Authority: Royal Borough of Kingston upon Thames



#### MONEY LAUNDERING REGULATIONS 2003

Intending purchasers will be asked to produce identification and proof of financial status when an offer is received. We would ask for your co-operation in order that there will be no delay in the offer process.

#### THE PROPERTY MISDESCRIPTIONS ACT 1991

The agent has not tested any apparatus, equipment, fixtures and fittings or services and so cannot verify that they are in working order or fit for the purpose. A Buyer is advised to obtain verification from their Solicitor or Surveyor. References to the Tenure of a Property are based on information supplied by the Seller. The Agent has not had sight of the title documents. The mention of any appliances and services within these details does not imply that they are in full and efficient working order. These particulars are intended as a guide and act as information to prospective buyers. They are not an offer or contract, or part of one. All details, areas, measurements floorplans and distances referred to are given as a guide only and should not be relied upon, they are approximate and illustrative only and **not to scale**. Lease details, service charges and ground rent (where applicable) are given as a guide only and the agent has not had sight of the original documentation, they should be checked by your solicitor prior to exchange of contracts.