

Beaumont Drive, Worcester Park, KT4

£475,000 Leasehold

3 Bedrooms | 2 Bathrooms | 1 Reception

IVY GATE™



Summary:

Ivy Gate are proud to present to the market this three bedroom modern apartment situated within the highly desirable and prestigious Hamptons development in Worcester Park. Located on the ground floor of this purpose built block, the property benefits from having French style double doors leading out to a private South West facing terrace. Internal accommodation comprises a generous hallway with ample built in storage leading through to the generous open plan living room/kitchen complete with modern integrated appliances. The main bedroom has built in storage and a spacious en-suite/WC. There are two further small double bedrooms and a modern family bathroom with walk-in shower. The property further benefits from one allocated parking space, and secure bike storage.

Modern Ground Floor Apartment

Private Patio Area

Desirable Hamptons Development

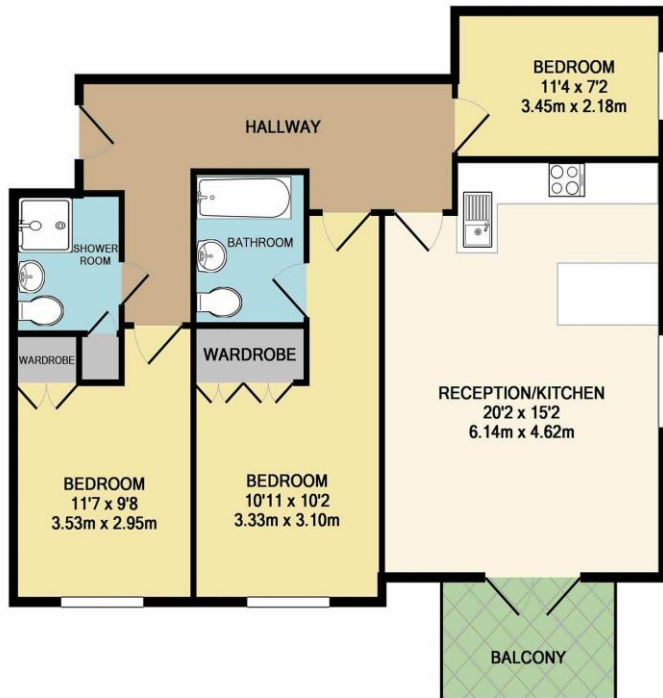
Three Bedrooms

Residents Gym, Tennis Courts, Private Function Rooms, etc

Beaumont Drive, Worcester Park, KT4

£475,000 Leasehold

3 Bedrooms | 2 Bathrooms | 1 Reception



TOTAL APPROX. FLOOR AREA 902 SQ.FT. (83.8 SQ.M.)

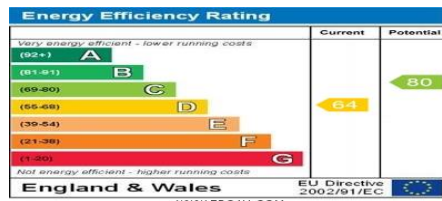
Whilst every attempt has been made to ensure the accuracy of the floor plan contained here, measurements of doors, windows, rooms and any other items are approximate and no responsibility is taken for any error, omission, or mis-statement. This plan is for illustrative purposes only and should be used as such by any prospective purchaser. The services, systems and appliances shown have not been tested and no guarantee as to their operability or efficiency can be given
Made with Metropix ©2018

Tenure: Leasehold

Council Tax: D

Local Authority: London Borough of Sutton

EPC Rating: D



MONEY LAUNDERING REGULATIONS 2003

Intending purchasers will be asked to produce identification and proof of financial status when an offer is received. We would ask for your co-operation in order that there will be no delay in the offer process.

THE PROPERTY MISDESCRIPTIONS ACT 1991

The agent has not tested any apparatus, equipment, fixtures and fittings or services and so cannot verify that they are in working order or fit for the purpose. A Buyer is advised to obtain verification from their Solicitor or Surveyor. References to the Tenure of a Property are based on information supplied by the Seller. The Agent has not had sight of the title documents. The mention of any appliances and services within these details does not imply that they are in full and efficient working order. These particulars are intended as a guide and act as information to prospective buyers. They are not an offer or contract, or part of one. All details, areas, measurements floorplans and distances referred to are given as a guide only and should not be relied upon, they are approximate and illustrative only and **not to scale**. Lease details, service charges and ground rent (where applicable) are given as a guide only and the agent has not had sight of the original documentation, they should be checked by your solicitor prior to exchange of contracts.