

Cowleaze Road, Kingston Upon Thames

Monthly Rental Of £1,600

1 Bedrooms | 2 Bathrooms | 1 Reception

IVY GATE™



Summary:

Ivy Gate are proud to present this very spacious and well presented one bedroom split level duplex apartment located in central Kingston and moments from Kingston BR comprising: large kitchen/reception room, downstairs cloakroom and utility cupboard, large bedroom and bathroom upstairs. This property benefits from secure video entry system and bike storage space. ideal for a single occupier or a professional couple with easy access to the main line station and the town centre with an array of shops, bars and restaurants. No parking available with this property.

One Bedroom Duplex Apartment
Fantastic Central Kingston Location
Downstairs WC

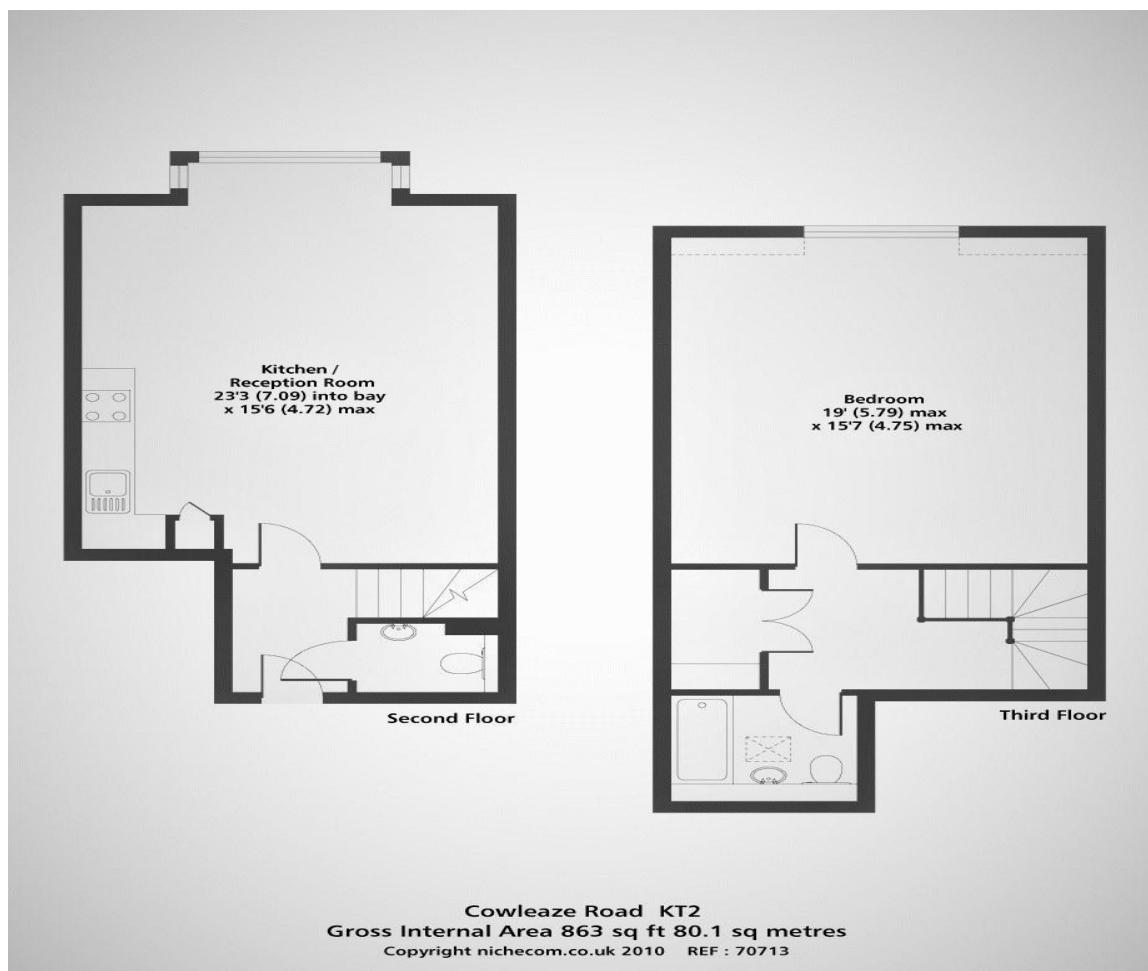
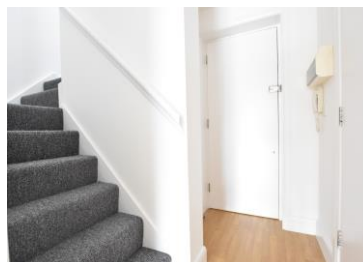
Modern Bathroom
Fully Fitted Open Plan Kitchen
Gas Central Heating

Cowleaze Road, Kingston Upon Thames

Monthly Rental Of £1,600

1 Bedrooms | 2 Bathrooms | 1 Reception

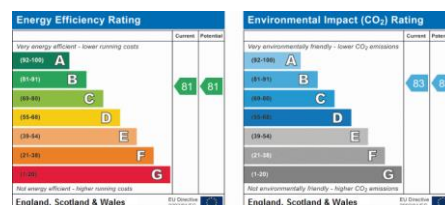
IVY GATE™



Tenure:

Council Tax: D

Local Authority: Royal Borough of Kingston upon Thames



MONEY LAUNDERING REGULATIONS 2003

Intending purchasers will be asked to produce identification and proof of financial status when an offer is received. We would ask for your co-operation in order that there will be no delay in the offer process.

THE PROPERTY MISDESCRIPTIONS ACT 1991

The agent has not tested any apparatus, equipment, fixtures and fittings or services and so cannot verify that they are in working order or fit for the purpose. A Buyer is advised to obtain verification from their Solicitor or Surveyor. References to the Tenure of a Property are based on information supplied by the Seller. The Agent has not had sight of the title documents. The mention of any appliances and services within these details does not imply that they are in full and efficient working order. These particulars are intended as a guide and act as information to prospective buyers. They are not an offer or contract, or part of one. All details, areas, measurements floorplans and distances referred to are given as a guide only and should not be relied upon, they are approximate and illustrative only and **not to scale**. Lease details, service charges and ground rent (where applicable) are given as a guide only and the agent has not had sight of the original documentation, they should be checked by your solicitor prior to exchange of contracts.