

Portsmouth Road, Thames Ditton

Monthly Rental Of £1,650

2 Bedrooms | 1 Bathrooms | 1 Reception

IVY GATE™



Summary:

Situated close to Thames Ditton Village and opposite Giggs Green is this stunning 2 double bedroom flat in the sought after development of Rythe Court. Within this exclusive development which is set back from the Portsmouth Road is a warm and welcoming flat, comprising; central hallway leading on to a large reception room, and a modern kitchen which has been well planned out. There is also a large family bathroom and two fantastic size double bedrooms. Rythe Court is a purpose built development moments from Giggs Green and within easy reach of the shops, cafes and amenities of Thames Ditton Village. The development derives its name from the River Rythe which runs nearby. The property is also located within easy reach of Thames Ditton and Surbiton mainline railway stations as well as the A3.

Two double bedrooms

Highly regarded development

First Floor Flat

Lovely communal gardens

Residents Parking

Available 10th May 2024

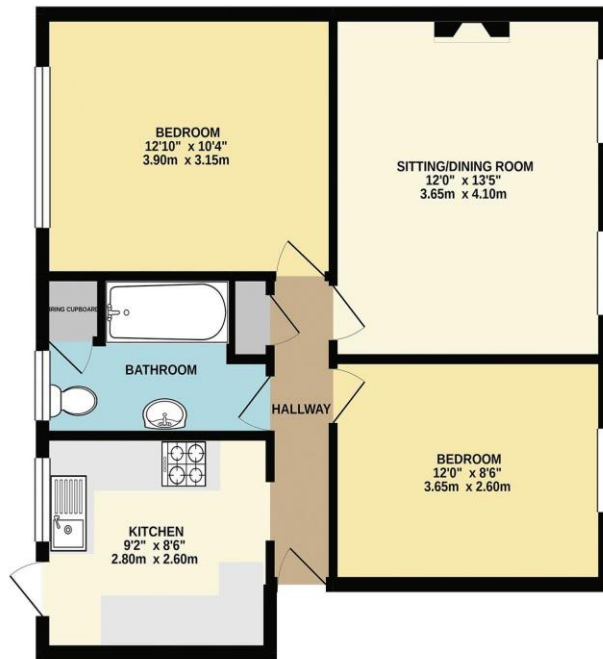
Portsmouth Road, Thames Ditton

Monthly Rental Of £1,650

2 Bedrooms | 1 Bathrooms | 1 Reception



580 sq.ft. (53.9 sq.m.) approx.



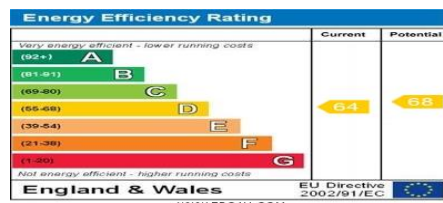
TOTAL FLOOR AREA: 580 sq.ft. (53.9 sq.m.) approx.
 Whilst every attempt has been made to ensure the accuracy of the floorplan contained here, measurements of doors, windows, rooms and any other items are approximate and no responsibility is taken for any error, omission or mis-statement. This plan is for illustrative purposes only and should be used as such by any prospective purchaser. The services, systems and appliances shown have not been tested and no guarantee as to their operability or efficiency can be given.
 Made with floorplan 11021.

Tenure:

Council Tax: C

Local Authority: Elmbridge Borough Council

EPC Rating: D



MONEY LAUNDERING REGULATIONS 2003

Intending purchasers will be asked to produce identification and proof of financial status when an offer is received. We would ask for your co-operation in order that there will be no delay in the offer process.

THE PROPERTY MISDESCRIPTIONS ACT 1991

The agent has not tested any apparatus, equipment, fixtures or services and so cannot verify that they are in working order or fit for the purpose. A Buyer is advised to obtain verification from their Solicitor or Surveyor. References to the Tenure of a Property are based on information supplied by the Seller. The Agent has not had sight of the title documents. The mention of any appliances and services within these details does not imply that they are in full and efficient working order. These particulars are intended as a guide and act as information to prospective buyers. They are not an offer or contract, or part of one. All details, areas, measurements floorplans and distances referred to are given as a guide only and should not be relied upon, they are approximate and illustrative only and **not to scale**. Lease details, service charges and ground rent (where applicable) are given as a guide only and the agent has not had sight of the original documentation, they should be checked by your solicitor prior to exchange of contracts.